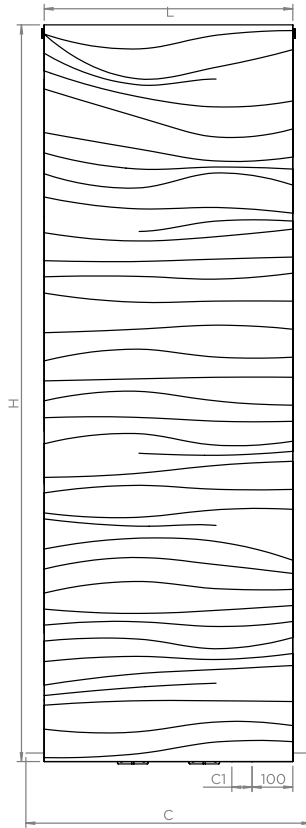
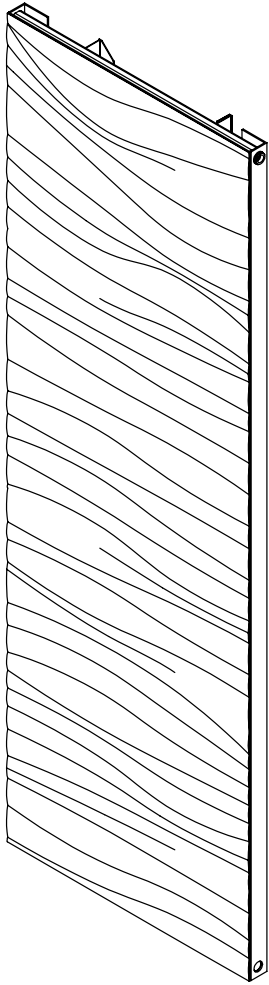


SESRIEM - SES186

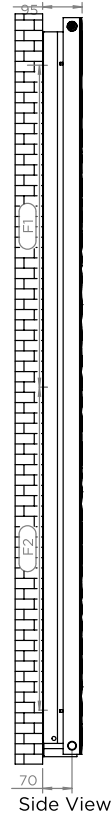
INS-VS1

ALL MEASUREMENTS ARE IN MILLIMETRES

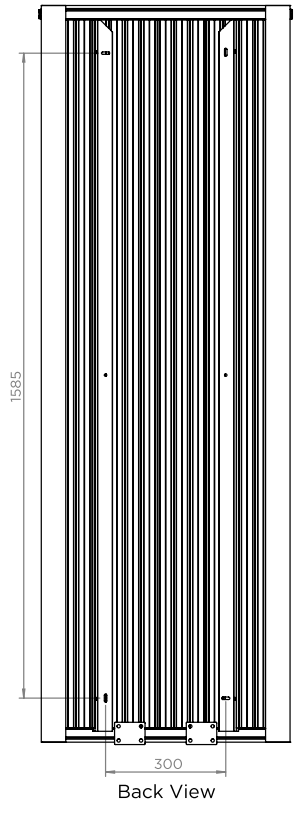
MANUFACTURED FROM ALUMINIUM



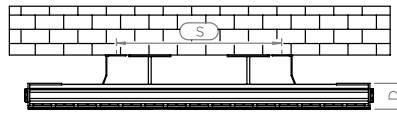
Front View



Side View



Back View



Top View

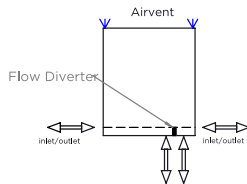
Installation Accessories:



Please observe that the collector fitted with a flow diverter is mounted at the bottom. This can be verified by visually checking or by referring to the installation diagram

When installing heating element, please knock through the centre hole of the diverter using a suitable rod. Please remove the disk if it comes loose and can be removed from a tapping

Plumbing Position:



Vertical mount
 All Dimensions are in mm
 Max. Working Pressure: 10 Bar
 Max. Working Temperature: 95° C
 Inlet / Outlet : 1/2" BSP
 Fuel : E/H/D
 Manufacturing Tolerance : - 5 mm

| PRODUCT CODE | Height | Length | Depth | Pipe Centres | | Bracket Centres |
|--------------|--------|--------|-------|--------------|---------|-----------------|
| | H | L | D | C1-C | F1-F2 | S |
| | mm | mm | mm | mm | mm | mm |
| SES186 | 1810 | 605 | 45 | 50-700 | 791-794 | 300 |

Technical specifications are subject to change without prior notice.

AEON is the designer heating division of Pitacs Limited.
 Pitacs Limited, Bradbourne Point, Bradbourne Drive, Tilbrook, Milton Keynes,
 Buckinghamshire, MK7 8AT, UK

T: +44 (0)1908 271155 E: info@pitacs.com W: www.aeon.uk.com

