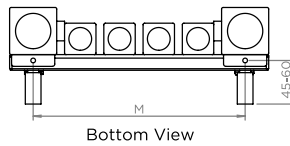
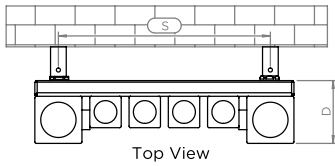
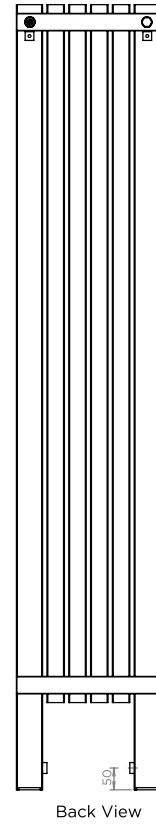
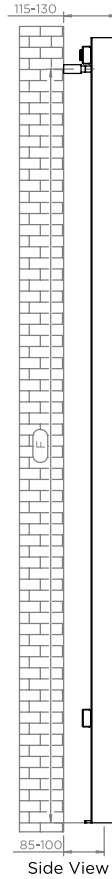
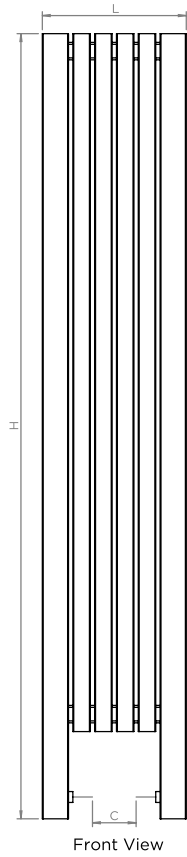
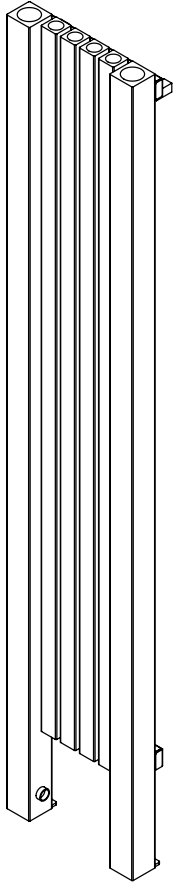


# MARION L

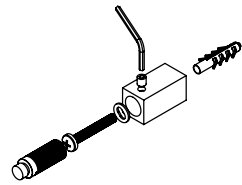
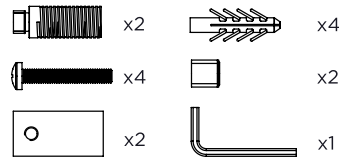
INS-VS1

ALL MEASUREMENTS ARE IN MILLIMETRES

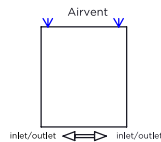
MANUFACTURED FROM STAINLESS STEEL



### Installation Accessories:



### Plumbing Position:



Vertical mount  
 All Dimensions are in mm  
 Max. Working Pressure: 8 Bar  
 Max. Working Temperature: 95° C  
 Inlet / Outlet : 1/2" BSP  
 Fuel : E/H/D  
 Manufacturing Tolerance : - 5 mm

PRODUCT CODE	Height	Length	Depth	Pipe Centres		Bracket Centres		
	H	L	D	C	F	S	M	
	mm	mm	mm	mm	mm	mm	mm	
MALT7-150130	1500	380	80	150	1428	320	320	
MALT5-180160	1800	280	80	50	1728	220	220	
MALT6-180160	1800	330	80	100	1728	270	270	
MALT5-200180	2000	280	80	50	1928	220	220	

Technical specifications are subject to change without prior notice.



AEON is the designer heating division of Pitacs Limited.  
 Pitacs Limited, Bradbourne Point, Bradbourne Drive, Tilbrook, Milton Keynes,  
 Buckinghamshire, MK7 8AT, UK

T: +44 (0)1908 271155 E: info@pitacs.com W: www.aeon.uk.com